

色谱柱: SinoChrom ODS-BP (4.6\*250mm, 5 μm)

流动相: A-0.1% 磷酸水溶液, B-乙腈

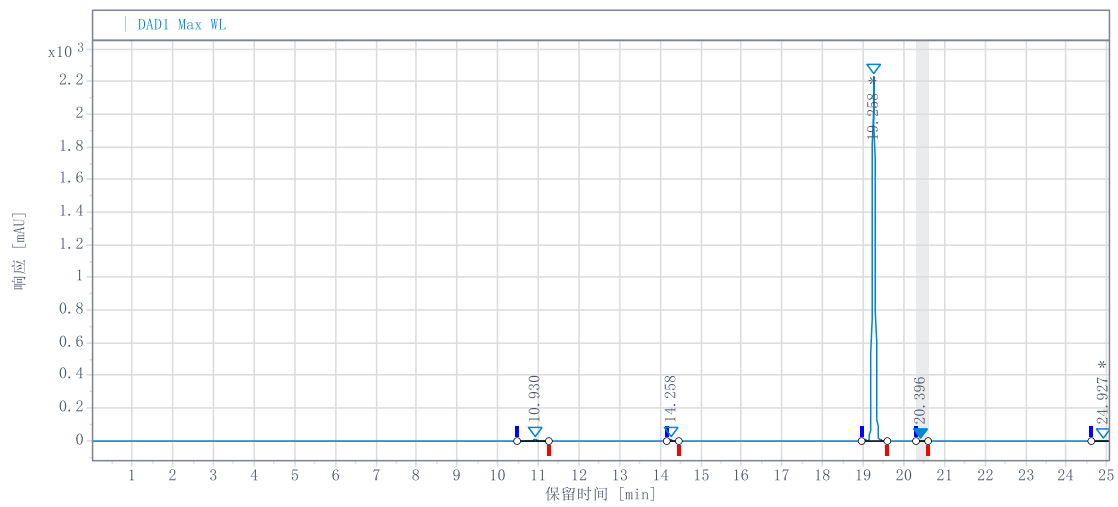
0-25 min 5~95%B

流速:1.0 ml/min

柱温: 25°C

检测器: DAD 236nm

溶剂: 甲醇



#	RT (min)	峰面积	峰面积 %	峰高
1	10.930	42.400	0.357	5.499
2	14.258	42.919	0.362	9.409
3	19.258	11741.334	98.945	2237.305
4	20.396	21.092	0.178	3.862
5	24.927	18.817	0.159	3.534

