

色谱柱: YMC-Pack ODS-AQ (4.6*250mm, 5 μm)

流动相: A-水, B-乙腈

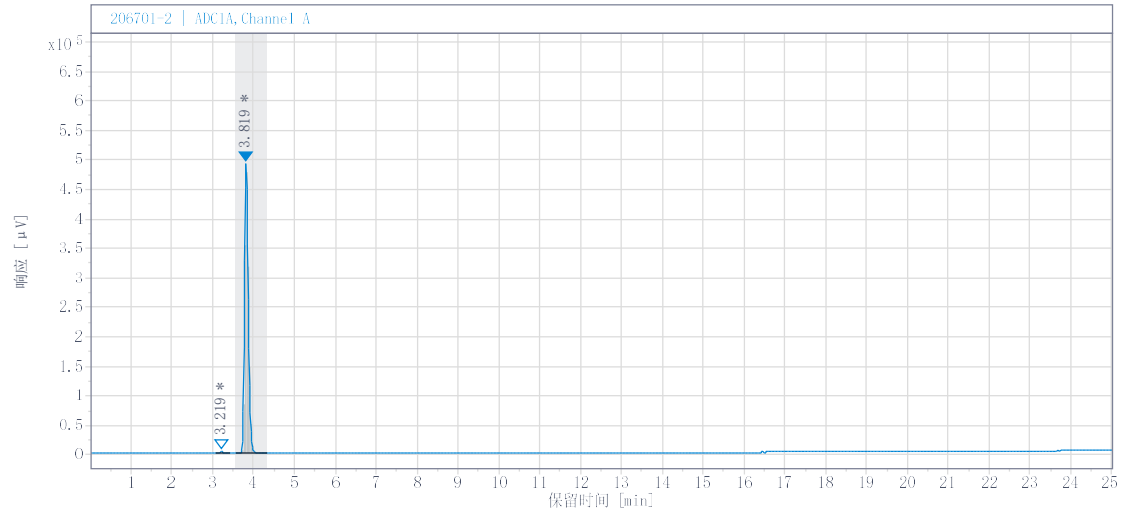
0-25min 99% A 等度

流速: 1.0 ml/min

柱温: 25°C

检测器: ELSD

溶剂: 水



#	RT (min)	峰面积	峰面积 %	峰高	峰高%
1	3.219	14725.087	0.479	2664.763	0.54
2	3.819	3061279.529	99.521	489752.670	99.46