

色谱柱: SinoChrom ODS-BP (4.6*250mm, 5 μm)

流动相: A-0.01%三氟乙酸水, B-乙腈

0min 80%A+20%B

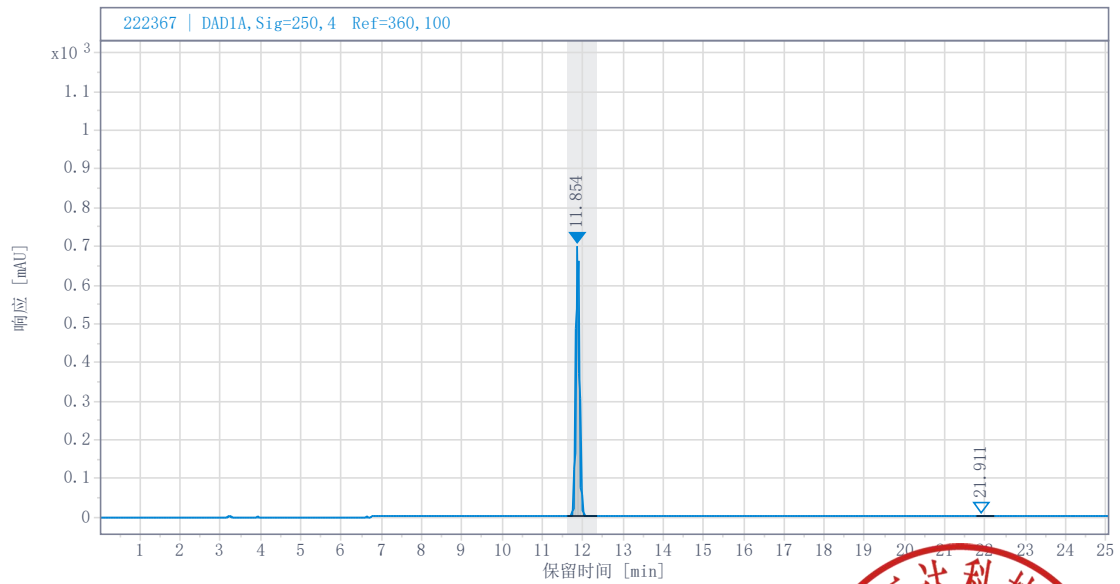
25min 5%A+95%B

流速: 1.0 ml/min

柱温: 25°C

检测器: DAD 250nm

溶剂: 甲醇



| # | RT (min) | 峰面积 | 峰面积 % | 峰高 |
|---|----------|----------|--------|---------|
| 1 | 11.854 | 4298.912 | 99.621 | 696.790 |
| 2 | 21.911 | 16.344 | 0.379 | 2.396 |

